

Union Crossing Town Homes

At Union Street and Pennsylvania Ave

Westminster, MD



Call Joanie
(443) 602-6463

Email:
Joanie.Prim@gmail.com

Episcopal Housing Corporation is a nonprofit organization that was founded in 1995 committed to strengthening neighborhoods through housing and community development activities. Since our founding, EHC has developed over 125 units of affordable housing, including multifamily rentals, senior, and special needs housing.

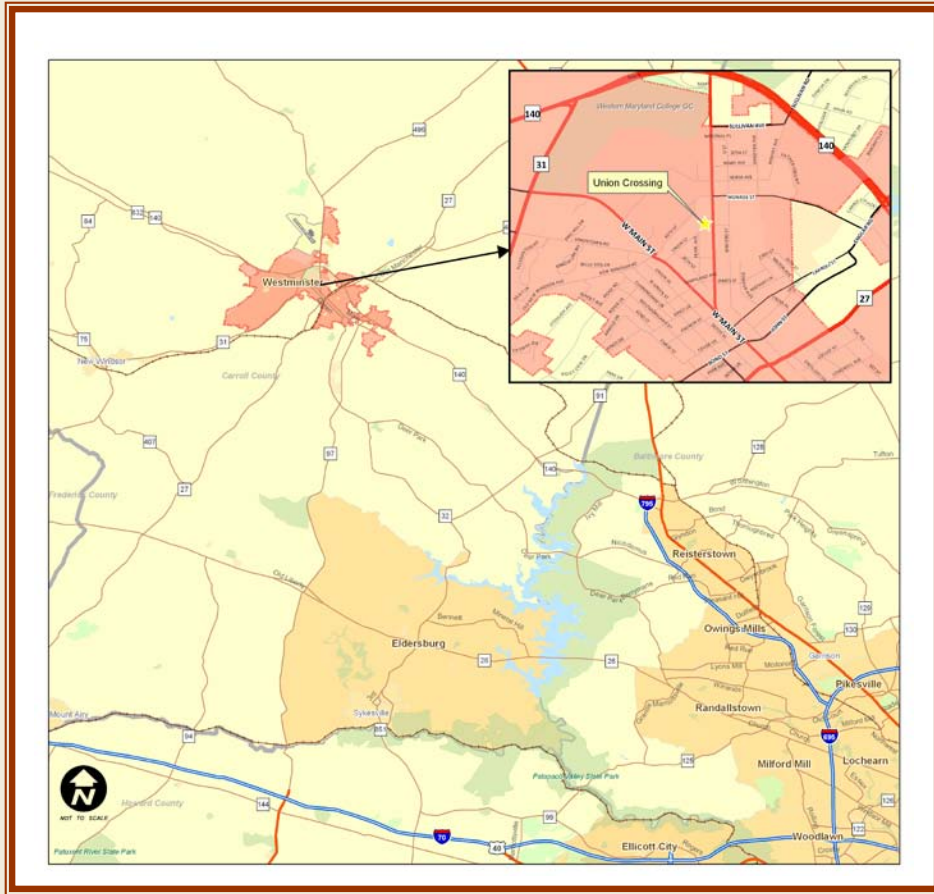
Features and Facts

- ❖ 1450 Square Feet
- ❖ Energy Star Appliances
- ❖ Off Street Parking
- ❖ Near Dutterer Park
- ❖ Located in Historic Downtown Westminster
- ❖ Three bedrooms
- ❖ Three Spacious Floors
- ❖ Unfinished Basement
- ❖ 1.5 Baths
- ❖ Energy Efficient
- ❖ Central A/C and Heat
- ❖ Near Carroll County Arts Center
- ❖ Municipal water/sewer
- ❖ Near McDaniel College

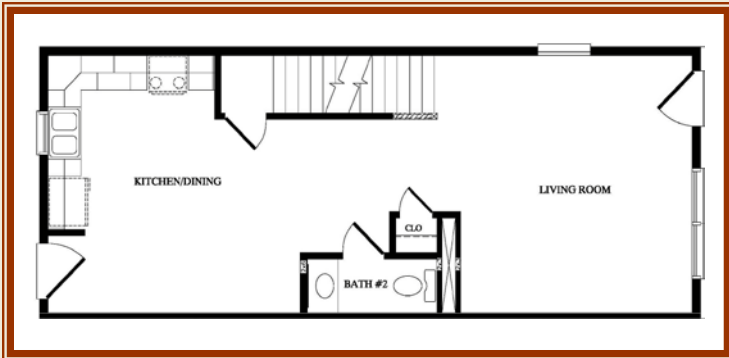
Room Sizes

- ❖ Living room - 15' 7 1/4" x 14' 10 7/8"
- Kitchen-Dining – 14' 10 7/8 x 15' 3 7/8"
- ❖ Bedroom - 11' 2 7/8" x 14' 10 7/8"
- ❖ Bedroom – 11' 3 7/8" x 14' 10 7/8"
- ❖ Bedroom - 15' 3 5/6" x 14' 10 7/8"
- Total square feet
 = 1450 sq. feet

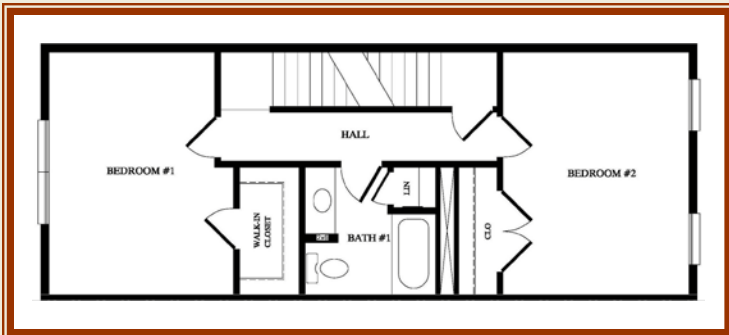




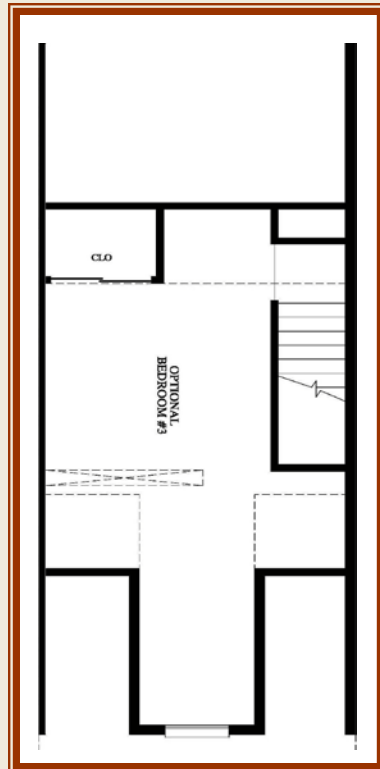
Location Map



First Floor



Second Floor



Third Floor